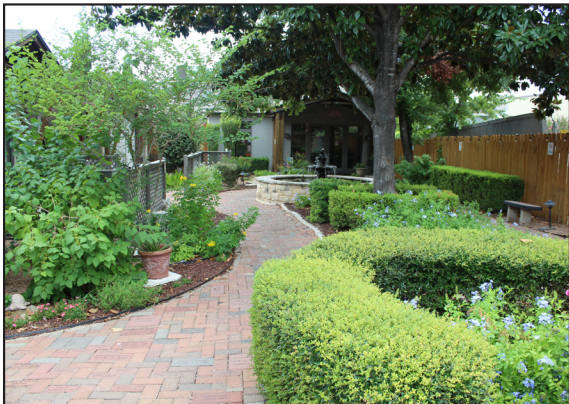


## Hospice Austin's Christopher House

With its garden, fountain and walkways, Hospice Austin's Christopher House is a secluded and peaceful place where Hospice Austin patients and their families are cared for 24 hours a day. Hospice Austin's Christopher House is a home away from home for our patients and families, both past and present.

## Hospice Austin

As the first hospice in Central Texas, Hospice Austin was established in 1980 to ease the physical, emotional and spiritual pain of any person in our community facing the final months of a serious illness. Our patients receive care in their own homes, at Hospice Austin's Christopher House or in nursing and assisted living facilities. As a nonprofit hospice, our resources are not used to benefit shareholders but instead go back into providing the very highest quality of care.



For more information:

### Hospice Austin

4107 Spicewood Springs Road

Austin, Texas 78759

(512) 342-4700

(800) 445-3261

[HospiceAustin.org](http://HospiceAustin.org)

[Volunteers@HospiceAustin.org](mailto:Volunteers@HospiceAustin.org)



Hospice Austin  
Your comfort. Our calling.

©2012 Hospice Austin



## Walk of Friends



Hospice Austin  
Your comfort. Our calling.

## Walk of Friends

The pathways that encircle Hospice Austin's Christopher House are made up of more than 20,000 bricks.

Etched into many of those bricks are lasting memories, joyful tributes and fond farewells.

The Walk of Friends is a poignant and enduring tribute to those who have touched our lives. The bricks remember departed loved ones, celebrate children, and honor dear friends.

The gardens and pathways provide a sanctuary for patients, families and friends who are always welcome to visit this special place.

Your Name:

---

Address:

---

City, State & Zip:

---

Daytime Phone:

---

Email address:

---

Please make check payable to Hospice Austin or complete the credit card information below.

Visa    Master Card    Discover    Amex

Card Number:

---

Exp. Date: \_\_\_\_\_ CVV: \_\_\_\_\_

Please allow approximately 90 days for installation of your brick. We will notify you upon completion.

Return this form with your payment to: Hospice Austin, 4107 Spicewood Springs Road Austin, TX 78759 or email [ahintz@HospiceAustin.org](mailto:ahintz@HospiceAustin.org).

## Walk of Friends

Complete the grid below with the exact wording and punctuation that you would like. All lines will be centered.

When counting characters, you must include spaces and punctuation marks.

\$500.00   4" x 8"   3 lines   16 characters/line


\$1,000.00   6" x 12"   5 lines   20 characters/line


\$2,500.00   12" x 12"   10 lines   20 characters/line


For more information about purchasing a brick or memorial options, please call (512) 342-4769,

(800) 445-3261 or email [ahintz@HospiceAustin.org](mailto:ahintz@HospiceAustin.org).